

Scot Murdoch

SCOT MURDOCH NJ AI-16248

PROPOSED WAREHOUSE

200 MILFORD ROAD
BLOCK 22.02, LOTS 2.02, 8.01, 11.01
TOWNSHIP OF EAST WINDSOR, MERCER COUNTY, NJ

No.	Date	Description

KSS ARCHITECTS
600 Chestnut Street
Suite 944
Philadelphia, PA 19106
t: 215.320.3000
www.kssarchitects.com



VIEW OF SOUTH ELEVATION (MAIN ENTRANCE)



VIEW OF EAST ELEVATION



VIEW OF NORTH ELEVATION (FACING I-95)

KSS

**PLANNING BOARD
SUBMISSION**

Project No.: 22898.000
Issued: 03/15/2023

**EXTERIOR
RENDERINGS**

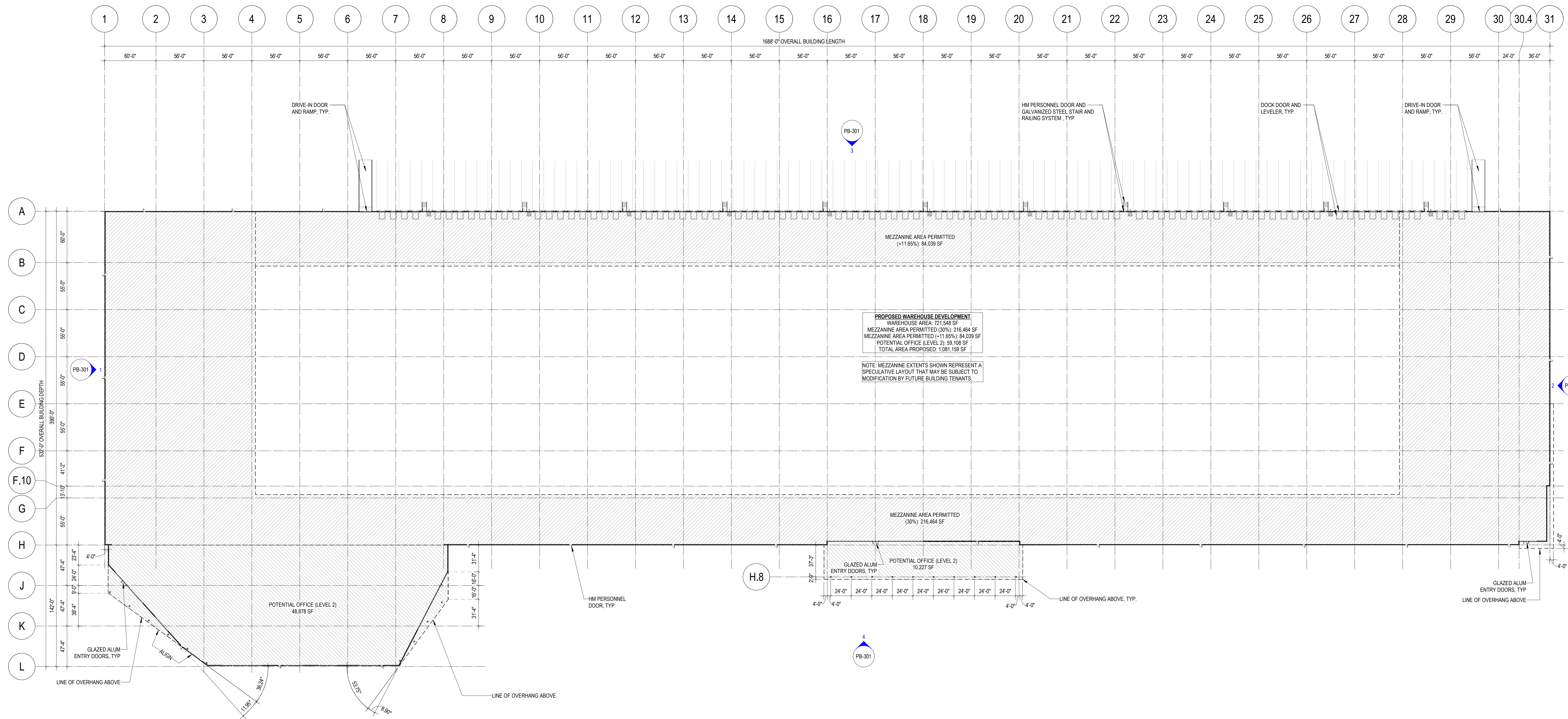
PB-001

PROPOSED WAREHOUSE

200 MILFORD ROAD
BLOCK 22.02, LOTS 2.02, 8.01, 11.01
TOWNSHIP OF EAST WINDSOR, MERCER COUNTY, NJ

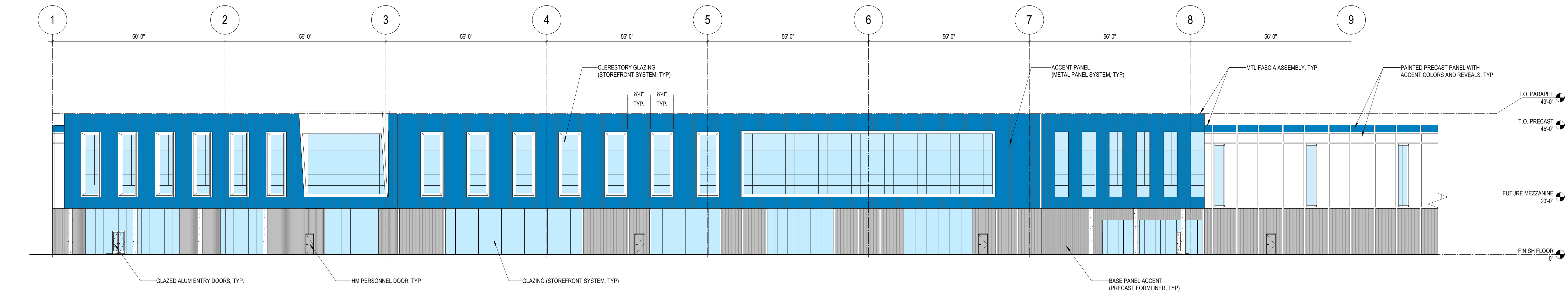
No.	Date	Description

KSS ARCHITECTS
 600 Chestnut Street
 Suite 944
 Philadelphia, PA 19106
 t: 215.320.3000
 www.kssarchitects.com

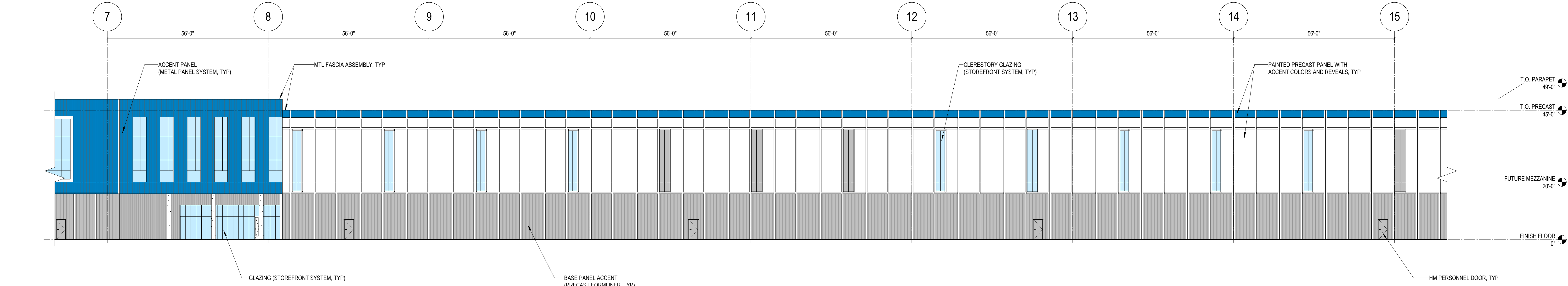


1 GROUND FLOOR PLAN
 PB-101 1" = 50'-0"

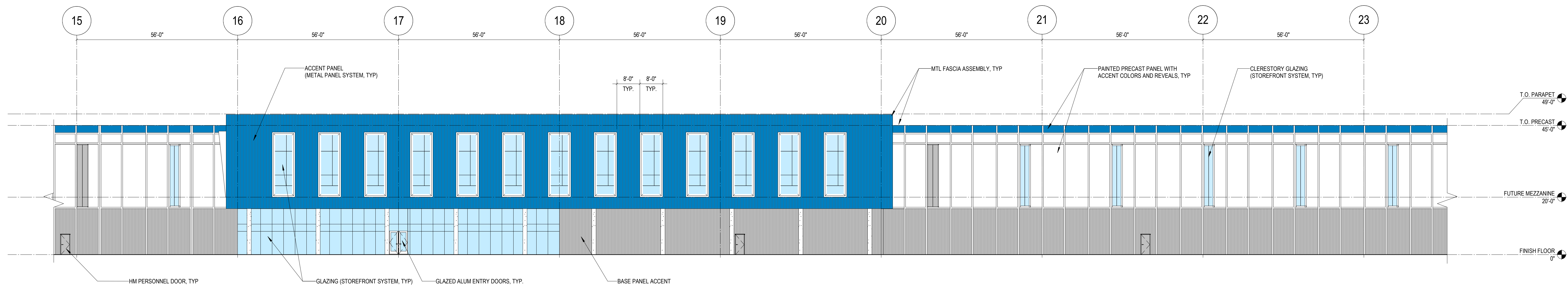
THE LINE SHOWN AT LEFT IS EXACTLY ONE INCH LONG AT THIS SHEET'S ORIGINAL PAPER SIZE



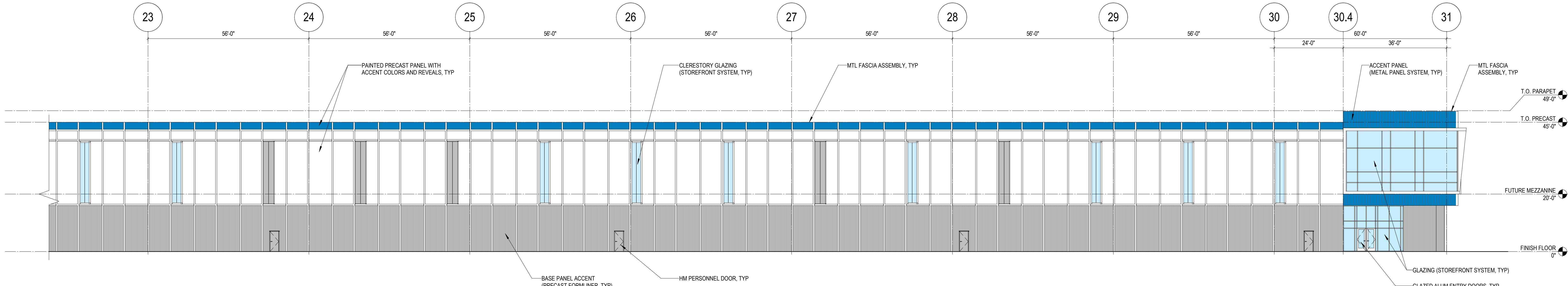
4 ENLARGED EAST ELEVATION - 4
PB-311 1/16" = 1'-0"



3 ENLARGED EAST ELEVATION - 3
PB-311 1/16" = 1'-0"



2 ENLARGED EAST ELEVATION - 2
PB-311 1/16" = 1'-0"



1 ENLARGED EAST ELEVATION - 1
PB-311 1/16" = 1'-0"

Scott Murdoch

SCOT MURDOCH NJ AI-16248

PROPOSED WAREHOUSE

200 MILFORD ROAD
BLOCK 22.02, LOTS 2.02, 8.01, 11.01
TOWNSHIP OF EAST WINDSOR, MERCER COUNTY, NJ

No.	Date	Description

KSS ARCHITECTS
 600 Chestnut Street
 Suite 944
 Philadelphia, PA 19106
 t: 215.320.3000
 www.kssarchitects.com



**PLANNING BOARD
 SUBMISSION**
 Project No.: 22898.000
 Issued: 03/15/2023
 ENLARGED
 ELEVATIONS

PB-311

2/10/2023 4:52:28 PM C:\Users\Brent\OneDrive\Documents\Projects\22898\PB_311\0311.dwg

PROPOSED WAREHOUSE

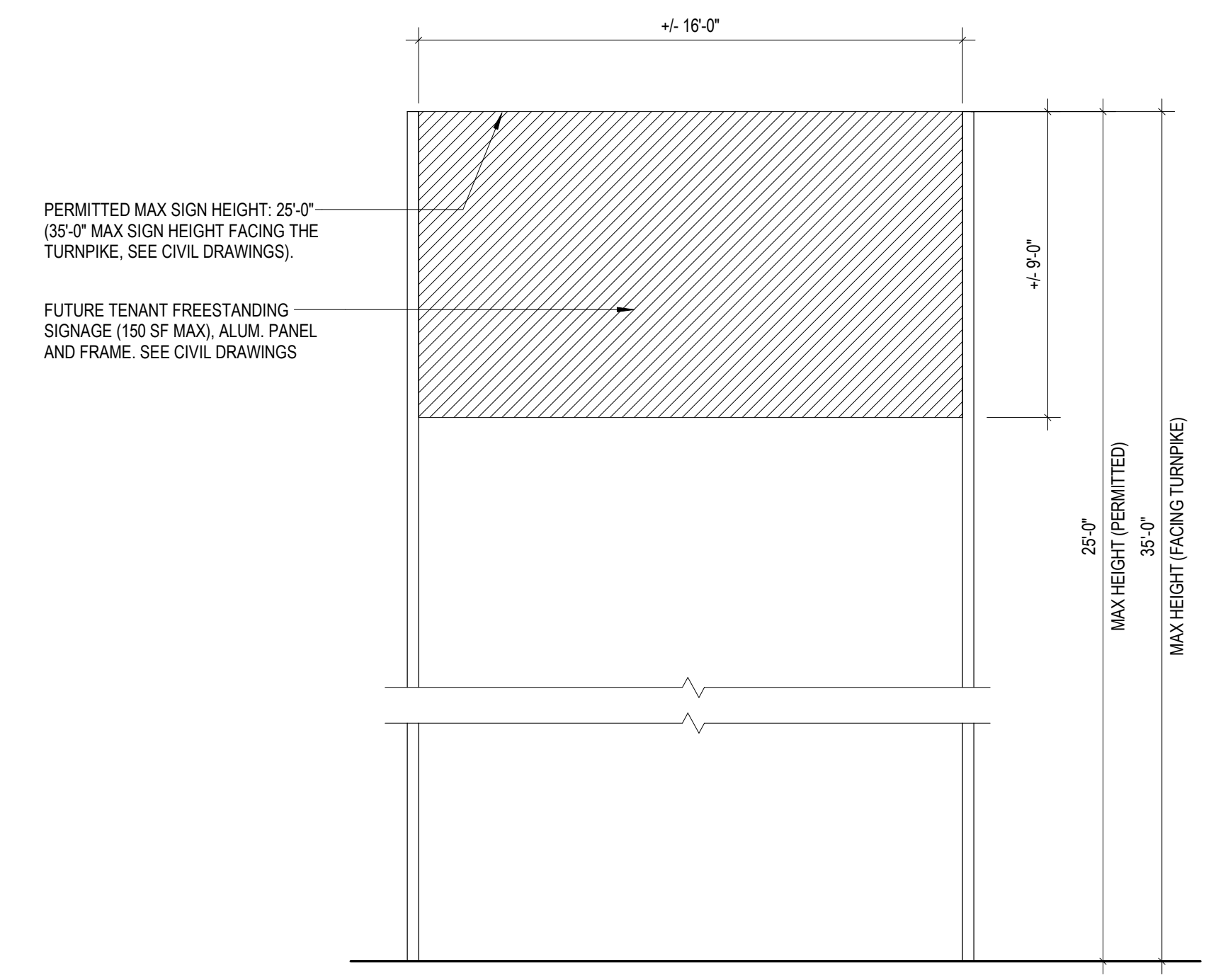
200 MILFORD ROAD
BLOCK 22.02, LOTS 2.02, 8.01, 11.01
TOWNSHIP OF EAST WINDSOR, MERCER COUNTY, NJ

No.	Date	Description

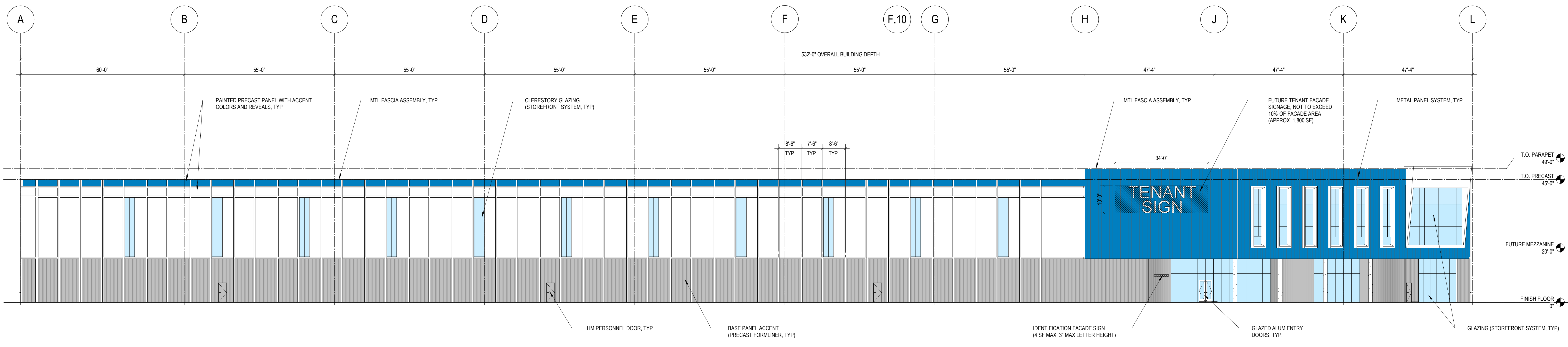
KSS ARCHITECTS
600 Chestnut Street
Suite 944
Philadelphia, PA 19106
t: 215.320.3000
www.kssarchitects.com

KSS
PLANNING BOARD
SUBMISSION
Project No.: 22898.000
Issued: 03/15/2023
ENLARGED
ELEVATIONS

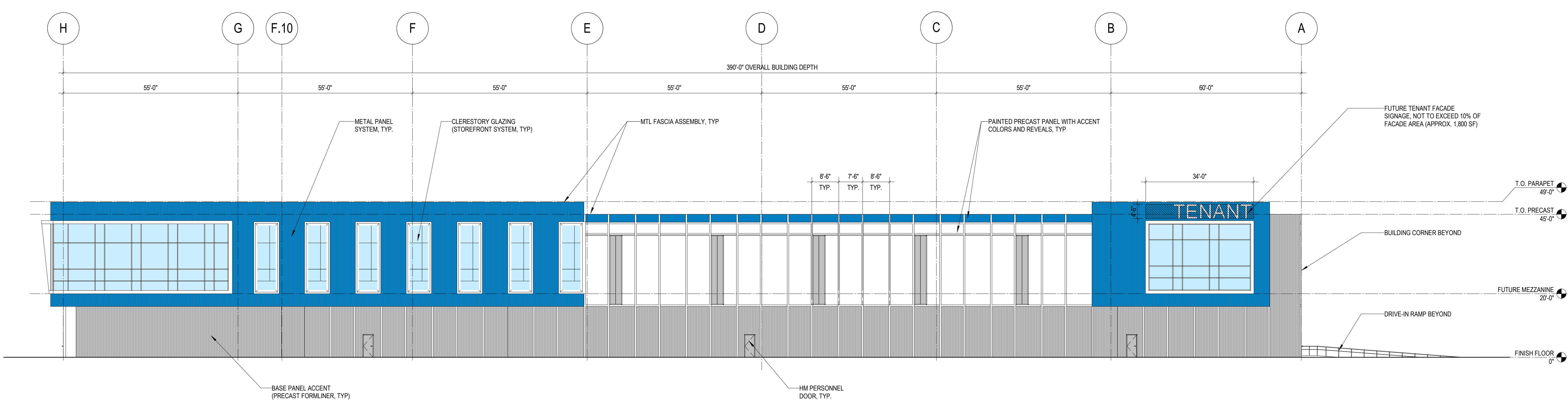
PB-313



3 FREESTANDING SITE SIGN DETAIL
PB-313 1/4" = 1'-0"



2 ENLARGED SOUTH ELEVATION
PB-313 1/16" = 1'-0"



1 ENLARGED NORTH ELEVATION
PB-313 1/16" = 1'-0"